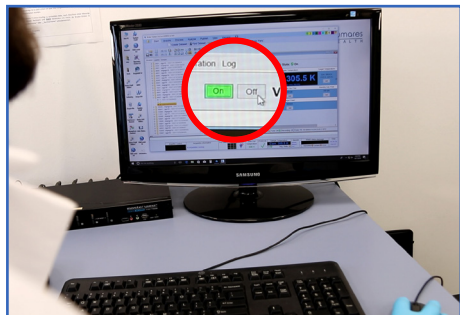


numares' Video Tutorial Series:

How to clean the NMR probe*

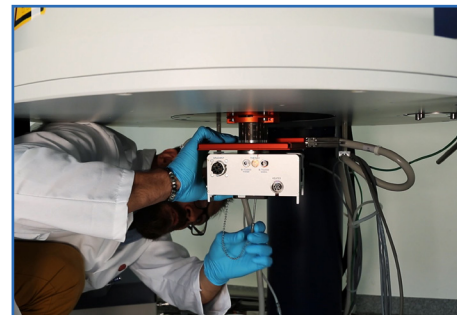
**Only for trained personnel. Also refer to Bruker manual: Bruker NMR magnet system.*



Turn off the temperature control unit (vtu) in TopSpin.



Carefully disconnect all cables and the BCU connection from the probe.



Loosen the screws at the bottom of the probe while holding the probe.

! Hold the probe tight to prevent fall and damage !



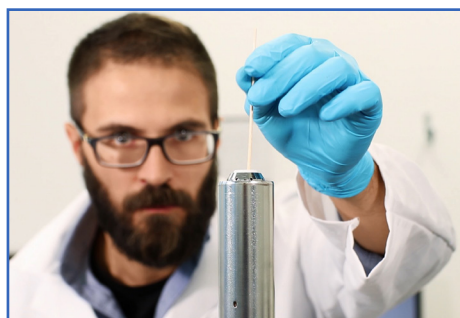
Slide the probe carefully out of the magnet.



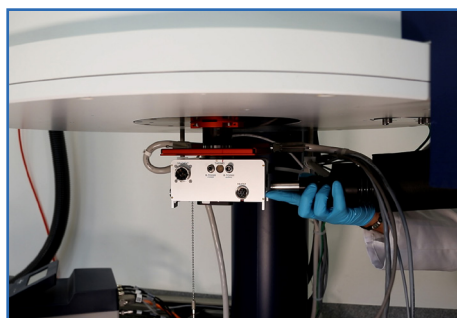
Place the probe upright onto a stable surface. Avoid tipping it over.



Soak the tip of a cotton swab with 96% ethanol from a clean tube. Use lint-free swabs to ensure probe is not contaminated.

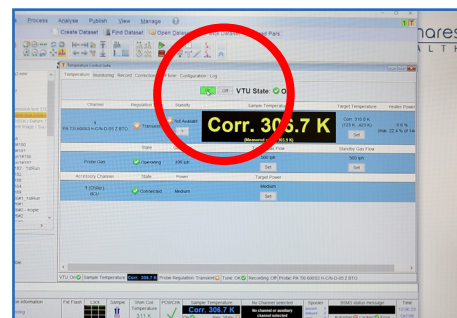


Insert the cotton swab carefully into the upper part of the probe until you feel resistance. Repeat this procedure 2x with fresh, clean ethanol soaked cotton swabs. Let the probe dry for several minutes before remounting.



Reinsert the probe and fasten screws. Reconnect all cables and reattach the BCU connection.

Find more helpful video tutorials on numares' YouTube channel...

Turn on the temperature control unit (vtu) and wait for 30 minutes. Perform a temperature calibration. (see NMR Maintenance Guide for AXINON® test systems).

Pedro Lopes, Technical Support