

numares' Video Tutorial Series: Sample Preparation

**Only for trained personnel. For sample preparation refer to respective IFUs of numares' AXINON® serum and urine kits.*



For higher sample volumes, all steps can be automated with liquid handling robots (e.g. Tecan® or Hamilton®).



For any sample preparation for the AXINON® System, please use exclusively numares' AXINON® serum or urine kit.*



Place respective additives solution into the prepared sample vials.



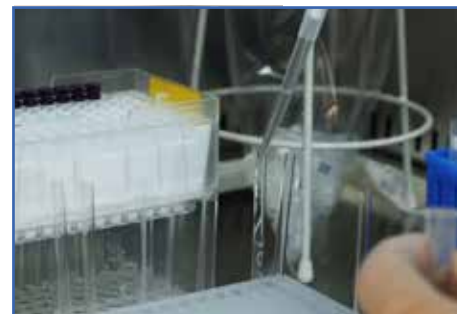
Transfer the analyte samples to the sample tubes containing the additives solution.

Note sample/additives ratios 10:1 (e.g. serum: 630µL/70µL) and 6:1 (e.g. urine: 600µL/120µL).



Mix carefully.

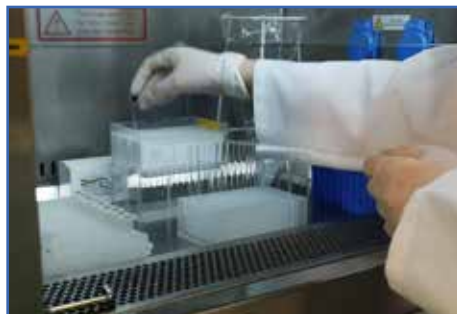
For urine samples: centrifuge the samples for 10 min. at 20,000 g.



Transfer 600µL of the prepared samples to NMR tubes - avoid any air inclusions by slowly draining the sample from the pipette.



Close each NMR tube thoroughly with an NMR cap.



Place the filled NMR tubes in a new NMR rack, starting at A3, A4, A5... H11.

Leave position A1, A2 and H12 free.



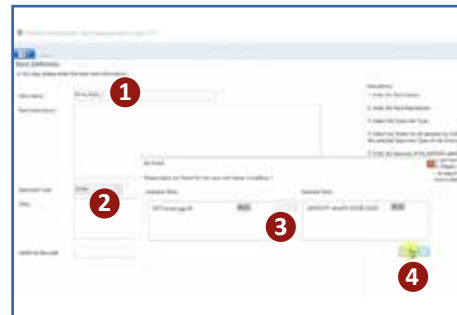
Prepare 1 NMR tube with calibrator and place at position A1.



Prepare 2 NMR tubes with quality control solution and place controls at positions A2 and H12.



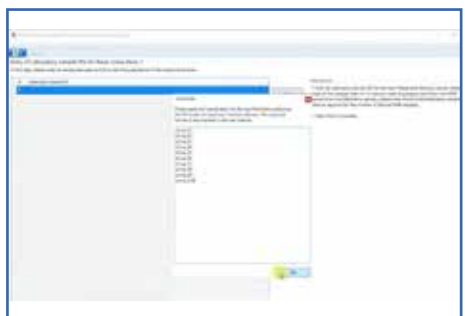
Open the AXINON® Sample Wizard and follow the instructions.



Name rack (1), select specimen type (2), choose required test module(s) (3) and click "Save" to continue (4).



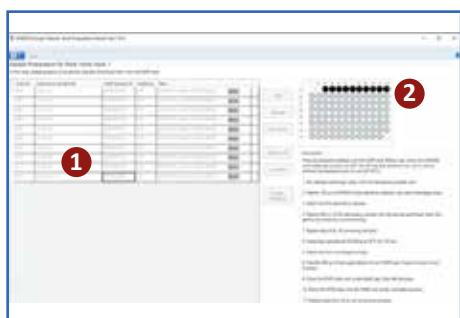
Scan the **additives solution barcode** in the kit IFU.



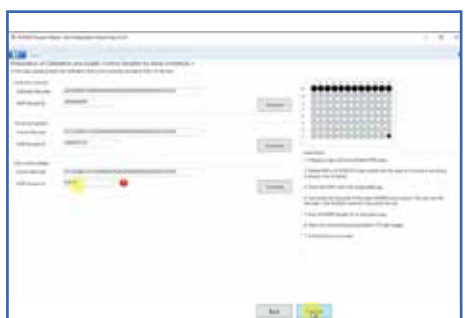
Enter the NMR Sample IDs or import the internal sample list and...



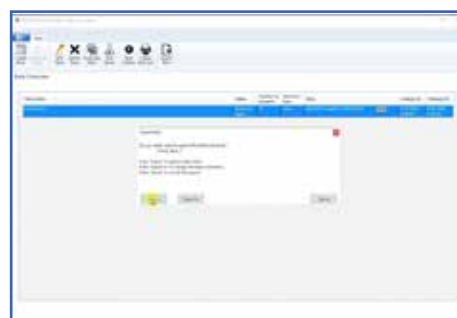
...scan all sample barcodes on the NMR caps, starting with A3.



All barcodes will be displayed in the AXINON® Sample Wizard (1). Scanned samples will be displayed as filled, black dots in the rack overview (2).



Continue with scanning the **calibrator barcode** in the IFU and the corresponding calibrator NMR cap. Then scan the **control barcode** in the IFU and the corresponding NMR caps of the 2 control samples. Save the loaded rack for the AXINON® Software by pushing „Finalize...“ (here the kit expiration



dates will be checked) and „Export rack“.



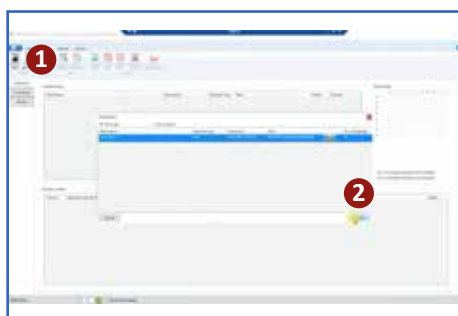
Transfer the rack to a free slot in the SampleJet.



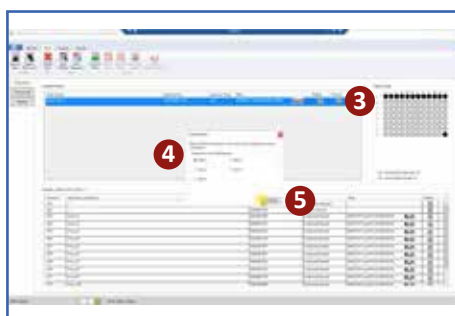
Keep slot number in mind.



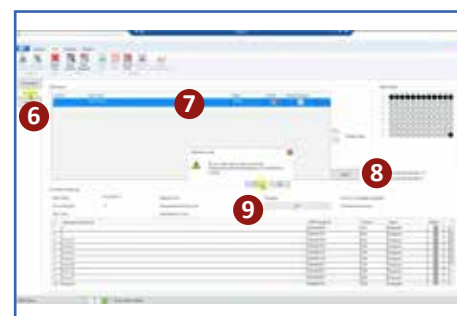
Open AXINON® Software



Import rack (1+2)...



...click "Commit" in the "Available Racks" row (3) and assign to the respective slot (4). Then click "Confirm" (5).



Switch to the tab "Processing" (6), select the rack in the "NMR set-up" (7) and press „Start“ to start measurements (8). Confirm that you want to start processing (9).

More from the *numares'* Video Tutorial Series:

